



CL-24ICAB-19

FEATURES:

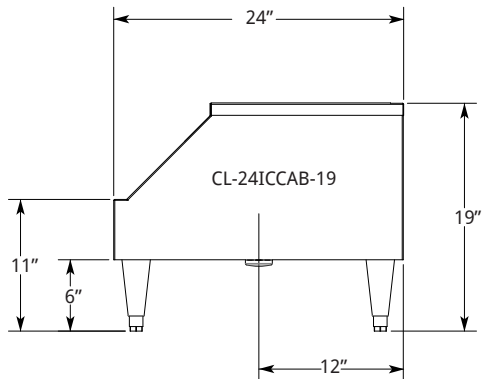
- 304 Stainless Steel Welded and Polished Top Assembly, Front, and Ends
- False Bottom
- Removable Perforated Pans
- Includes Ice Chest Cover
- Die-Cast Heavy Duty 6" Stainless Steel Equipment Legs with Adjustable Feet
- Stainless Steel Drain with 1 1/2" Standard Male Pipe Thread (1 1/2" I.P.S. - Std. Thread), Gasket and Nut Field Installed
- Optional: Set of (4) 5" Casters (Replaces 6" Legs, 2 Fixed; 2 Locking Brake and Swivel - Factory Installed)

MODEL NUMBERS:

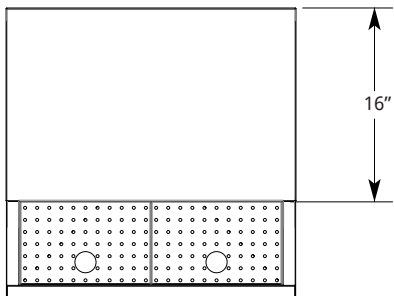
Description	Model
Beer Bin	CL-24ICAB-19
	CL-24ICAB-31

BEER STORAGE

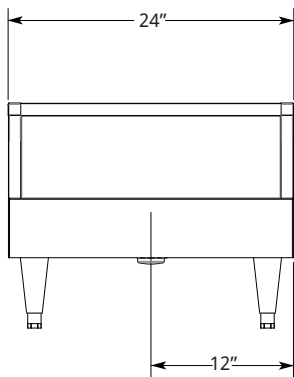
SIDE VIEW:



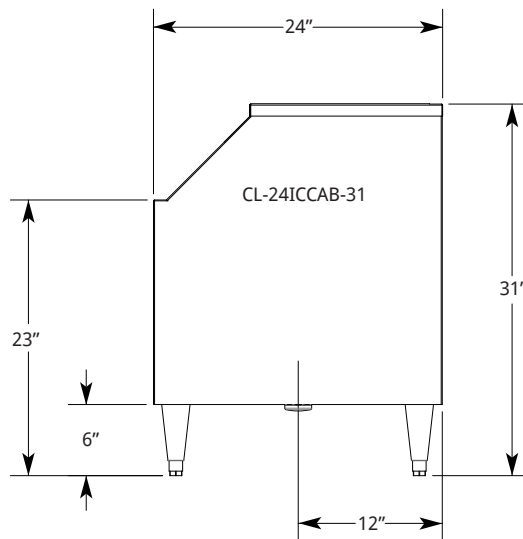
TOP VIEW:



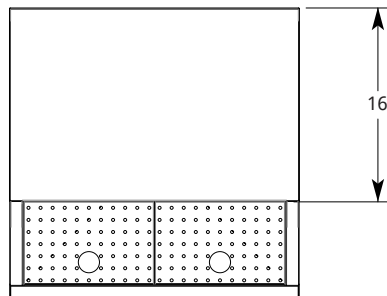
FRONT VIEW:



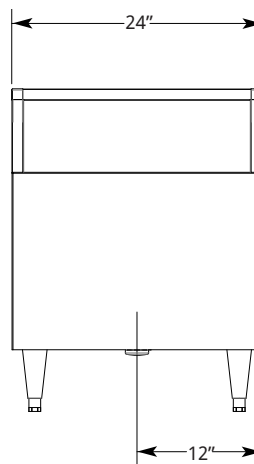
SIDE VIEW:



TOP VIEW:



FRONT VIEW:



LaCrosse has a policy of continuous product improvement, and reserves the right to change design and specifications without notice.

L#1021.0317