



FEATURES:

- 304 Stainless Steel, Welded and Polished Top Assembly, Front Apron and Ends
- 20-Gauge Polished, Deep-Drawn 304 Stainless Steel Tanks (Where Applicable)
- Galvannealed Steel Understructure
- Legs: Steel Tube and Welded Cross-Brace Construction, with Corrosion Resistant Hammertone Paint and High-Impact Plastic Adjustable Feet
--OR Die Cast Heavy Duty 6" Stainless Steel Equipment Legs with Adjustable Feet
- Stainless Steel Drain with 1 1/2" Standard Male Pipe Thread, Gasket and Nut -- Field Installed (Where Applicable)
- Constructed to Meet NSF Specifications

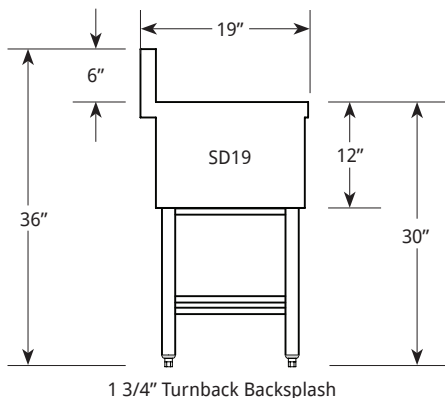
MODEL NUMBERS:

Description	Model	Model	Model
Handsink	SD12HS	SK12HS	
	SD18HS		
w/Built-In Soap & Towel Dispensers			CL12HS-ST
w/Blender Shelf			CL12RSCH
			SK18RSCH
w/Trash Receptical			CL18HS-TRA
Trash Receptical			CL12TRA
			CL14TRA (L, R)

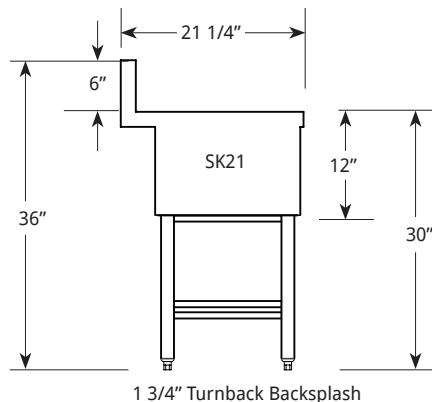
HANDSINKS

Includes: Gooseneck Faucet (4" Centers), 3" Strainer Basket Drain Assembly, and Bowl 10"x12"x6" Deep

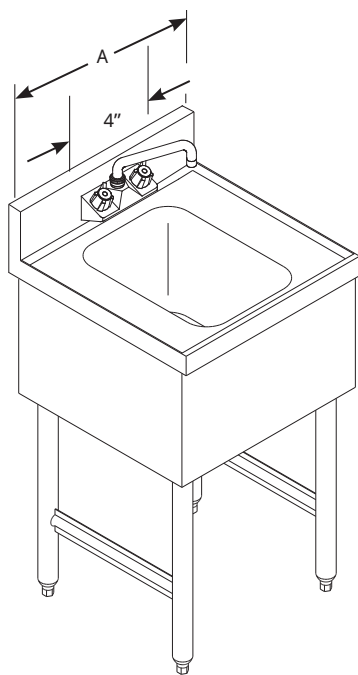
SIDE VIEW:



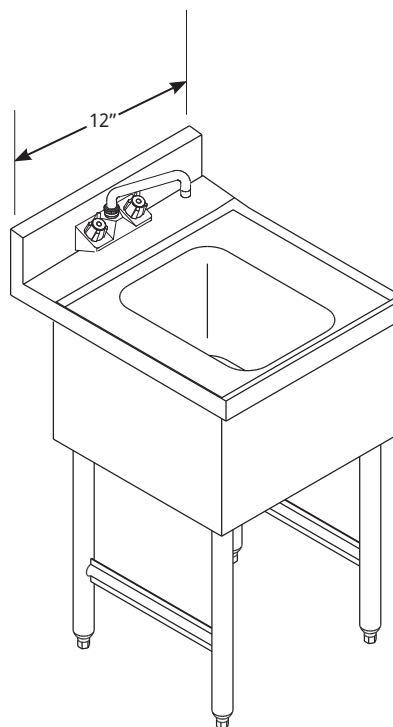
SIDE VIEW:



ANGLED VIEW:



ANGLED VIEW:



Model	A
SD12HS	12"
SD18HS	18"

Model	A
SK12HS	12"

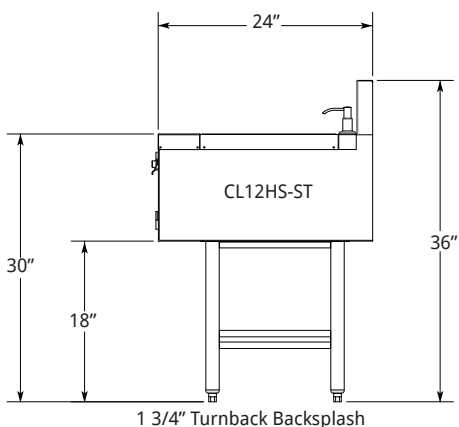
Includes: Wall Mount Faucet (4" Centers), 3" Strainer Basket Drain Assembly, and Bowl 10"x14"x9 3/4" Deep

HANDSINK WITH SOAP & TOWEL DISPENSER

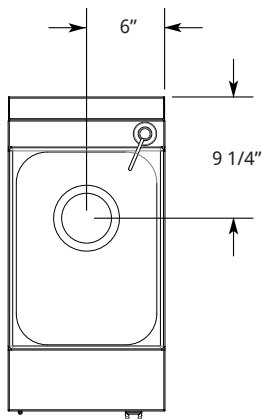
HANDSINK WITH TRASH RECEPTACLE

Includes: Gooseneck Faucet (4" Centers), 3" Strainer Basket Drain Assembly, and Bowl 10"x12"x6" Deep

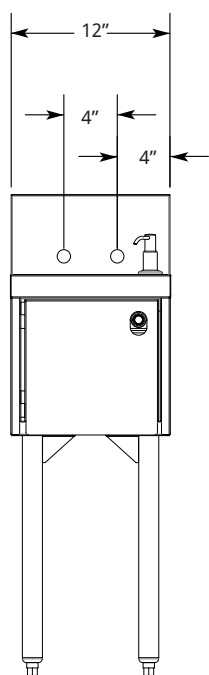
SIDE VIEW:



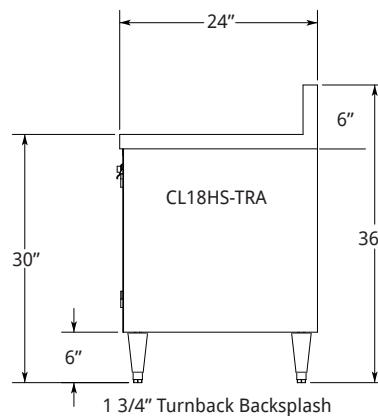
TOP VIEW:



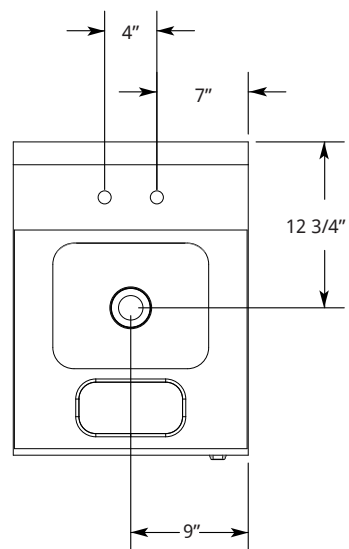
FRONT VIEW:



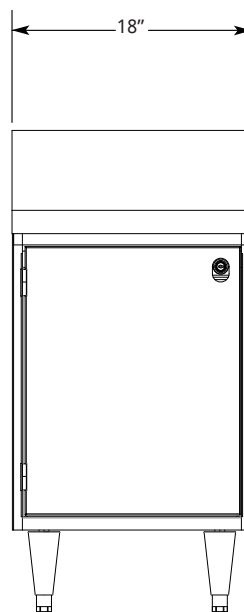
SIDE VIEW:



TOP VIEW:



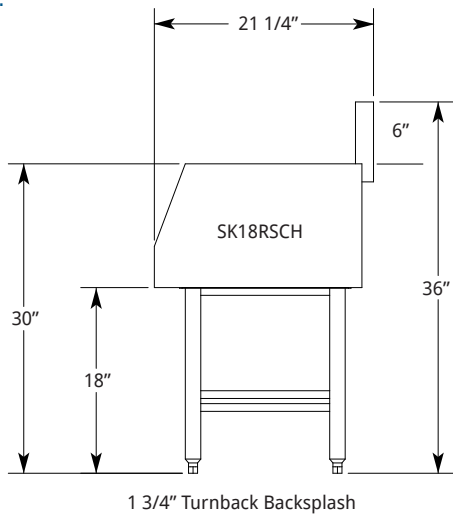
FRONT VIEW:



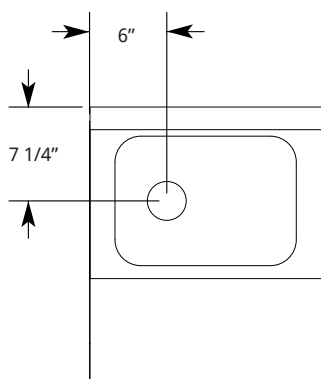
HANDSINK WITH BLENDER SHELF

Includes: Gooseneck Faucet (4" Centers), 3" Strainer Basket Drain Assembly, and Bowl 10"x12"x6" Deep

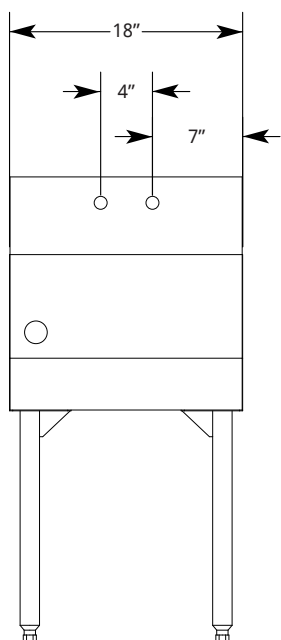
SIDE VIEW:



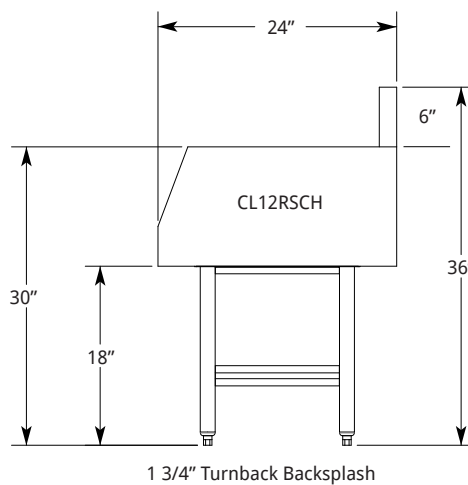
TOP VIEW:



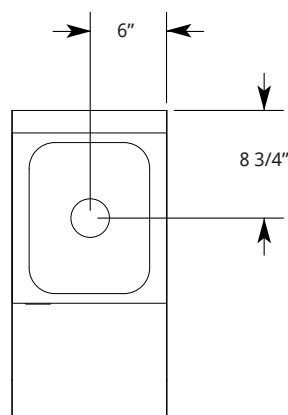
FRONT VIEW:



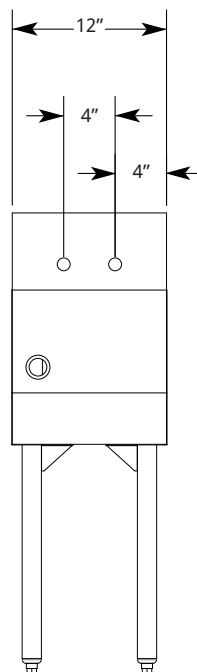
SIDE VIEW:



TOP VIEW:

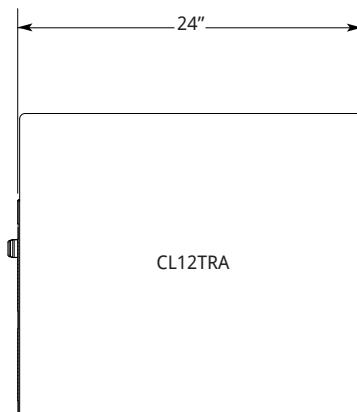


FRONT VIEW:

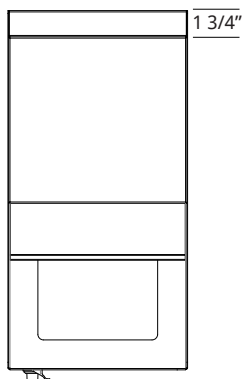


TRASH RECEPTACLE

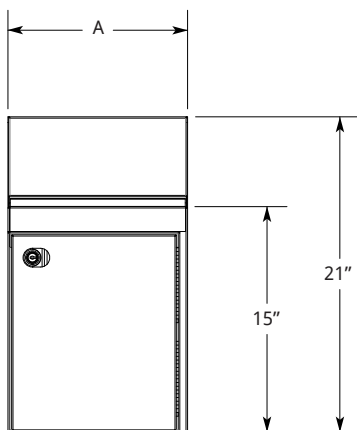
SIDE VIEW:



TOP VIEW:



FRONT VIEW:



Model	A
CL12TRA	12
CL14TRA*	14

*14" unit designed to attach to one adjacent unit and free standing on the other side. One 18" leg provided. Specify left or right.

LaCrosse has a policy of continuous product improvement,
and reserves the right to change design and specifications without notice.

L#1024.0317